

ROTC

Branch of Choice

CHART YOUR COURSE



CAREER
SATISFACTION
PROGRAM

SHAPE YOUR ARMY EXPERIENCE

ROTC Branch of Choice



To Improve your Branch Satisfaction, You Can Extend Your Active Duty Service Obligation by Three Years to **Get Your Branch of Choice**

1. ROTC Still Branches According to the Cadet OML
(See OMS Score Calculation Tab)
2. Top 10% Cadets on the AD OML will get their First Choice
3. Cadets in the Top 50% of Each Branch Allocation Will Not Incur the Three Year Obligation even if you signed a CSP Branch Option contract

Repeat:: IF you signed a CSP Branch ADSO contract and fall in the top 50% of your branch allocation you WILL NOT be charged the three year ADSO

4. Remaining 50% of Branch Slots will be assigned in the following priority
 1. Those willing to serve to obtain the branch (Branch of Choice)
 2. Army requirements
 3. By OML

*note: Only 65% of a branch allocation can come from the top half of the AD OML
4. Willingness to sign a CSP Branch ADSO Does Not Guarantee Your First Branch Choice
5. Total Slots in Each Branch Based on Army Requirements

The Active Duty Branching Process

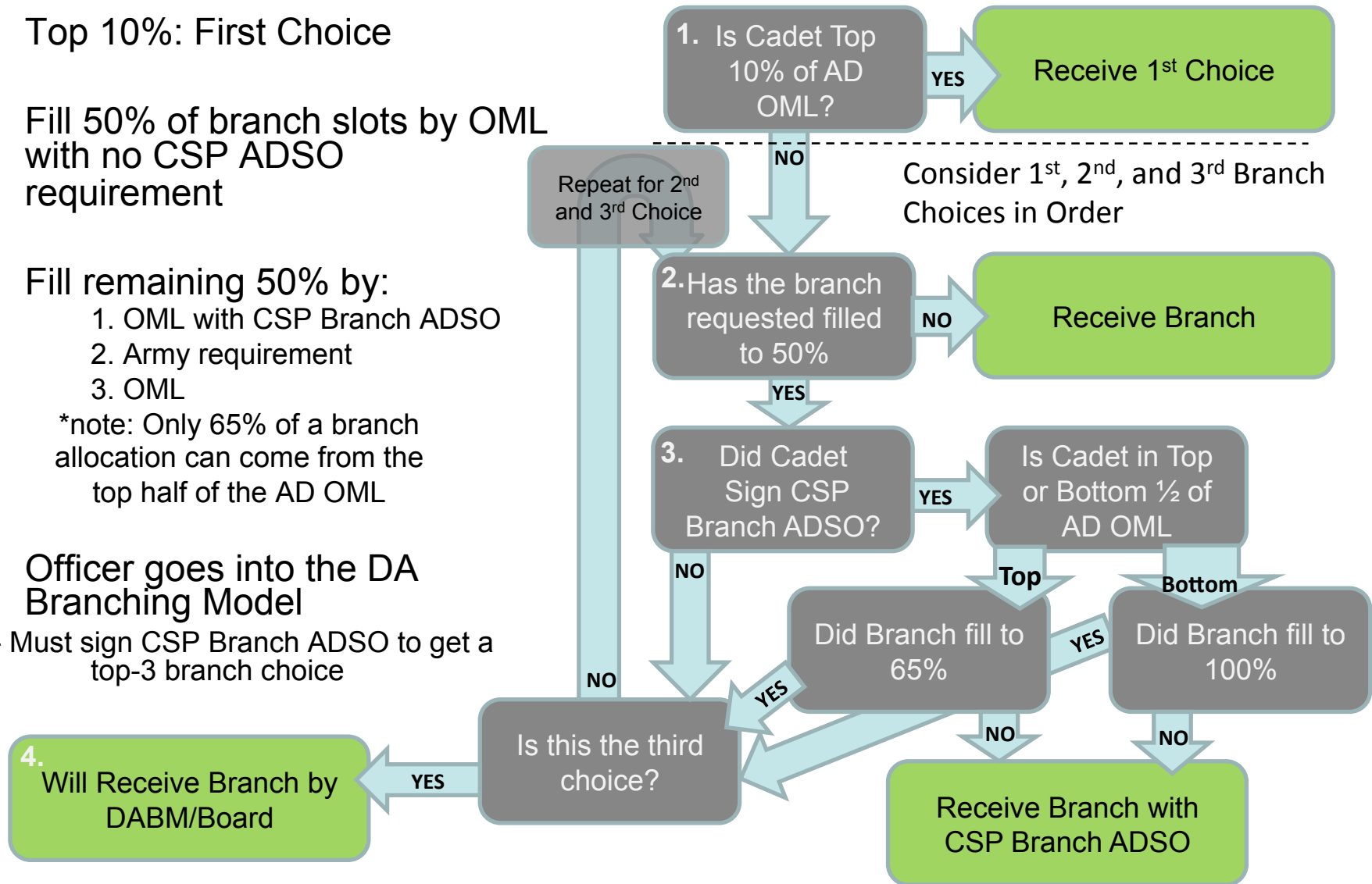


1. Top 10%: First Choice
3. Fill 50% of branch slots by OML with no CSP ADSO requirement

4. Fill remaining 50% by:
 1. OML with CSP Branch ADSO
 2. Army requirement
 3. OML

*note: Only 65% of a branch allocation can come from the top half of the AD OML

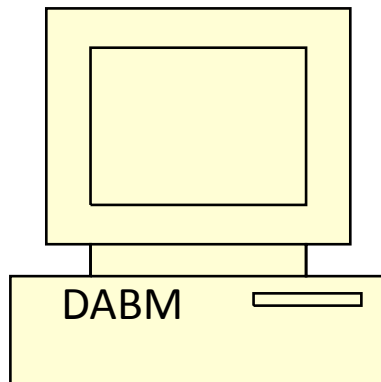
4. Officer goes into the DA Branching Model
 - Must sign CSP Branch ADSO to get a top-3 branch choice



Branching Method 4: DABM



Branch Method 4:
Will Receive Branch
by DABM/Board



DABM provides a branch to all
Cadets not pre-branched.
After DABM, all branches are
filled to exact Army
Requirements

- The Department of the Army Branching Model (DABM) is an optimization program that provides a branch to all Cadets not pre-branched

- The DABM attempts to optimize three main things:

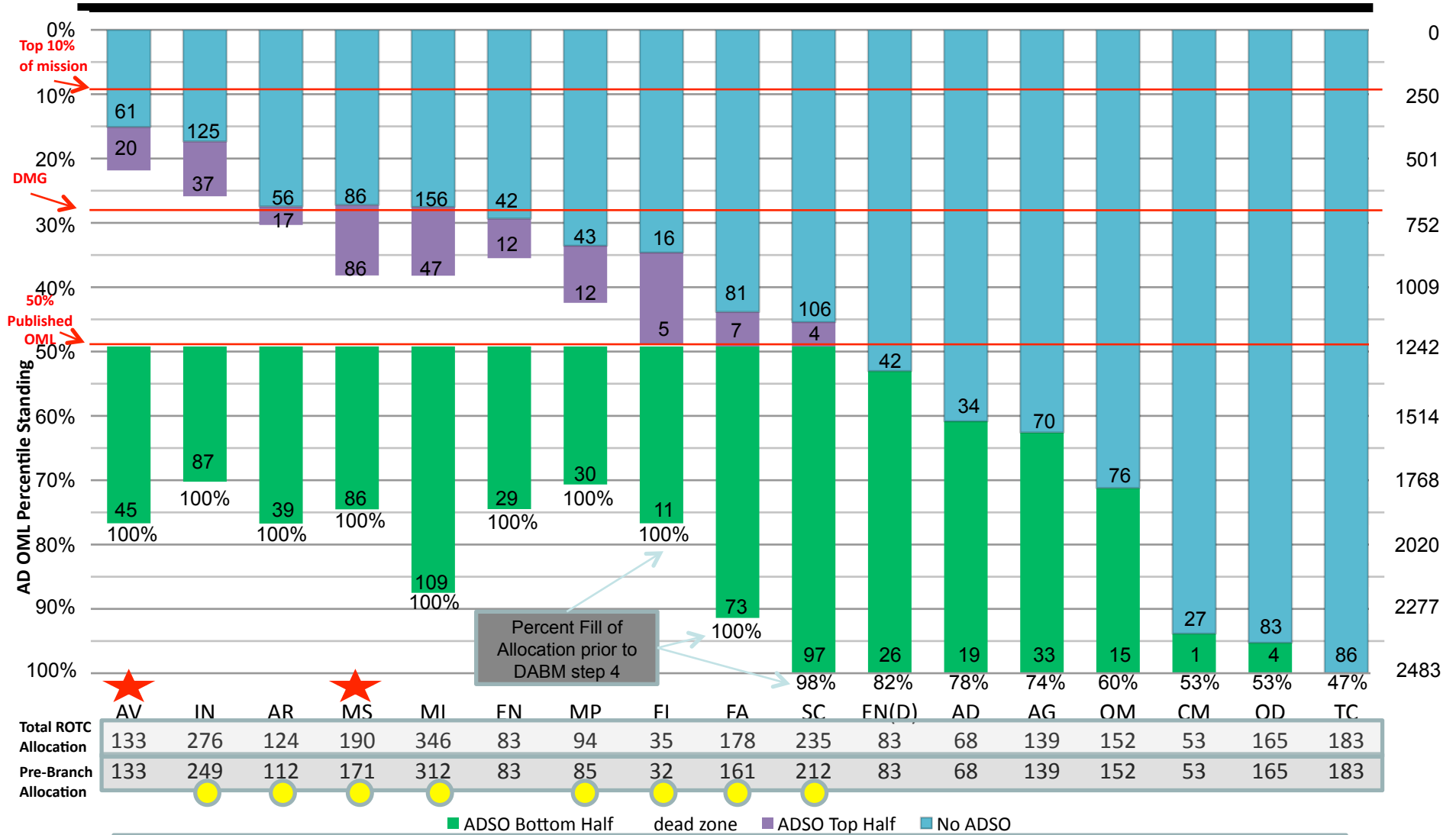
1. OML Quality balance between branches
2. Demographic balance between branches
3. Cadet Branch Satisfaction

- The Branching and Selection board must Validate the DABM's branch assignments.

NEW for yg2011

The DABM will not consider a Cadet for one of their top three branch choices, unless the Cadet has signed a CSP Branch ADSO. In previous years the top three choices were not considered regardless of ADSO. If the Cadet receives a top-3 branch, the CSP ADSO will be charged.

yg2010 Pre-Branch Fill Rates



★ Branches that had Pre-branching due to Aviation Program UND or Required Medical Specialties
● Branches that had Pre-branch Allocations reduced to ensure 10% of Branch to DABM
EN(D) Cadets with Engineer Degrees, 50% of "EN" allocation considered to degreed engineers only

Branch Proc

yg2010 Branch Detailing



FY 10 BRANCH DETAIL Mission

Branch Detail Mission							Percent of Basic Branch required to be detailed
		Detail Branch				Total	
		AR	CM	FA	IN		
Donor Branch	AD	5	3	4	11	23	34%
	AG	8	19	13	19	59	42%
	FI	5	4	5	10	24	69%
	MI	50	24	46	101	221	64%
	SC	28	12	24	54	118	50%
	Total	96	62	92	195	445	

Branch Detailing gives the officer an opportunity to serve in IN, AR, FA or CM during their platoon leader years. Volunteers are considered FIRST.

- Army Branch Detail requirement of 447
- No top 10% non-volunteer required to detail
- DA Restriction of “No More Than” 4% Female to FA Branch and 30% Female to CM Branch
- Volunteers considered first
- Board was directed to distribute quality